

BIOMETRICS VERIFICATION

bioscrypt™

2006 Biometric Consortium Conference
Robert L. Williams
President and CEO

bioscrypt
on board


BIOMETRICS VERIFICATION

Biometrics for Physical and Logical Access Control

“The typical enterprise must manage increasingly virtual relationships with employees, contractors, customers, partners, suppliers, and a variety of other network constituents. The old way of thinking about corporate boundaries and network security—the firewall as an impenetrable perimeter—no longer apply.

Suddenly, the ability to manage identity has a direct impact on your company’s brand and its ability to adapt to new business models. Do it well and your company can make money in new ways. Do it poorly and your company will be damaged severely.”

Jamie Lewis
CEO and Research Chair
Burton Group



bioscrypt
on board

BIOMETRICS VERIFICATION

Why Converge?

“The reasons for convergence differ by industry and range from regulation (such as HSPD-12), to enhanced security (energy and pharmaceuticals), to efficiencies and cost savings (financial services and manufacturing).”

» Trends 2006: Identity Management, Forrester Research, Inc., February 14, 2006.

bioscrypt
on board

BIOMETRICS VERIFICATION

Benefits of Convergence


- **Increase Enterprise Security**
 - Integrated solutions ensure that logical and physical access can be terminated in a single operation
 - Systems employ multi factor, including smart cards and pins, but only biometrics provide for strong authentication.
 - Control physical access to buildings, server rooms, desktops and networks with one common access control credential.
 - Ensures security solution is used consistently to achieve the desired security benefits.
 - Implement and manage role based authentication policies for today's distributed workforce.
- **Decrease Costs**
 - Save money by consolidating credentials for IT and physical access systems with a unified biometric and/or smart card credential.

bioscrypt
on board

BIOMETRICS VERIFICATION

The Challenge

- **Multiple Credentials**
 - Limited interoperability across systems
 - Often based upon proprietary technologies
 - Weak security infrastructure
 - Multitude of different biometric sensors in PC's, Peripherals and Physical access control technologies
 - Multiple and proprietary credentialing systems
- **Interoperability**
 - For physical access, contact-less protocols are unique
 - Multiple biometric sensor technologies
- **Multiple accounts/authentication policies**
 - Email, network logon, CRM, ERP, web apps
 - Stretches most Single Sign On Engines (SSO)




biocrypt
on board

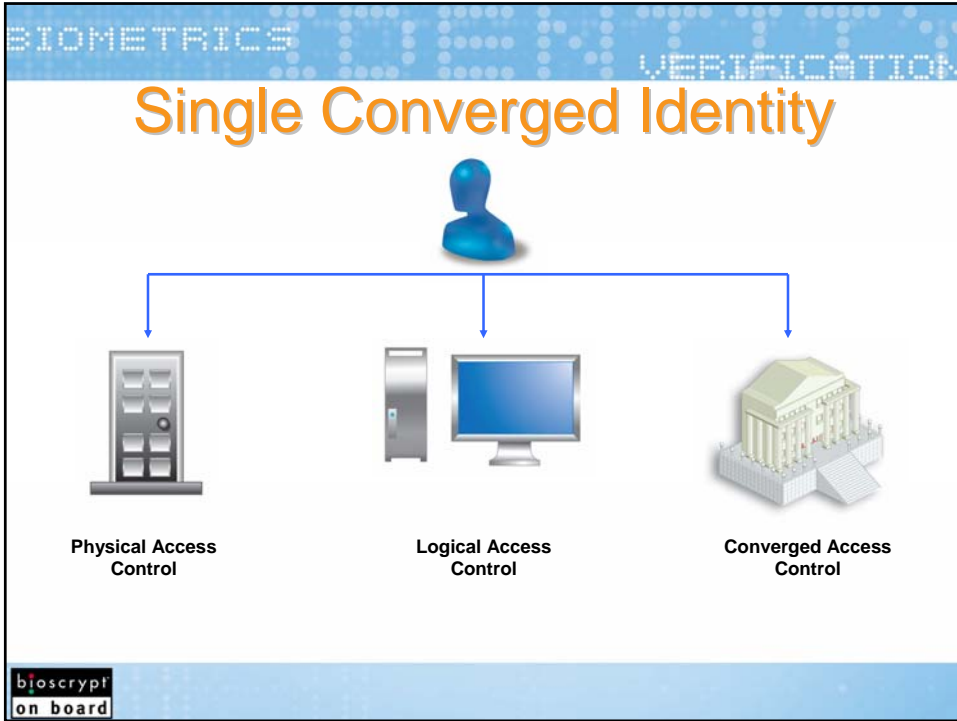
BIOMETRICS VERIFICATION

Technology Components

- **Card Selection**
 - Interoperability requirements for legacy systems
 - Proximity or contact only
- **Physical Access Readers**
- **Logical Access Infrastructure**
- **Credentialing system**
 - Proofing, enrollment, issuance
 - Fingerprint capture and template generation
 - Lifecycle management of the credentials to support replacement and Suspension
- **Provisioning of user privileges across physical and logical systems**
 - Multiple accounts/authentication policies
 - Email, network logon, CRM, ERP, web, physical access



biocrypt
on board



BIOMETRICS VERIFICATION

Questions?

bioscrypt
on board