

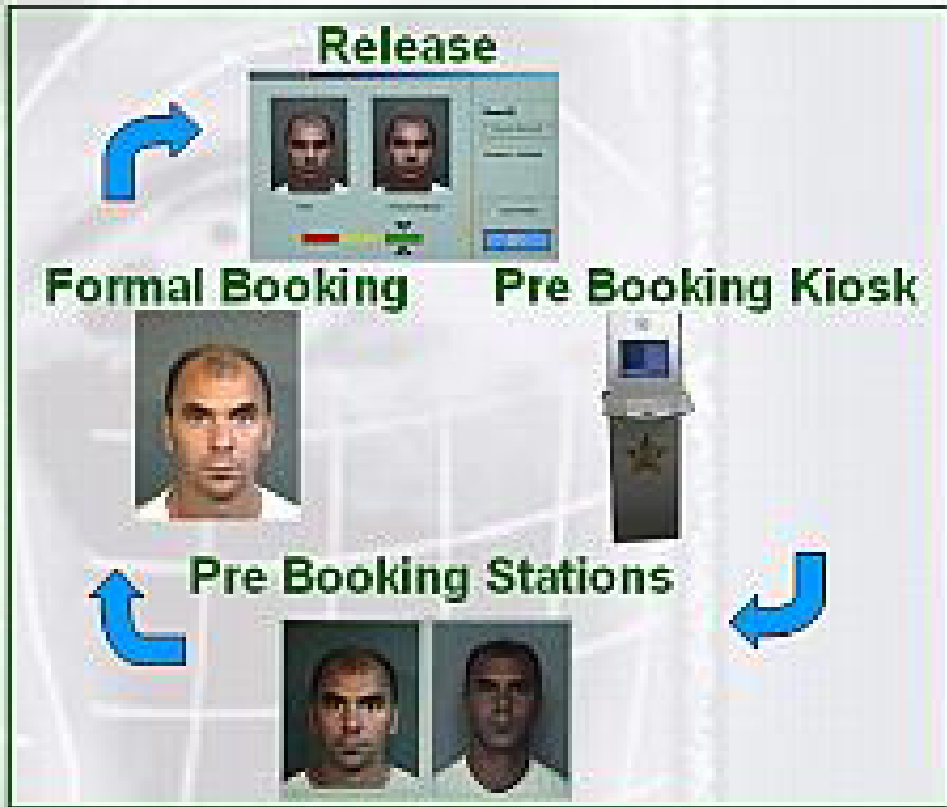
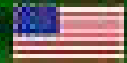


# Facial Recognition; The Pinellas County Sheriff's Office Experience

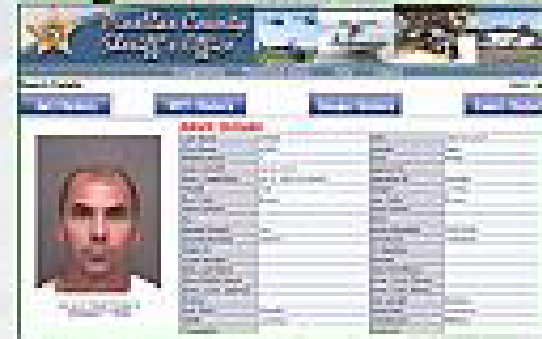
**Lt. Jim Main**

**Scott McCallum**

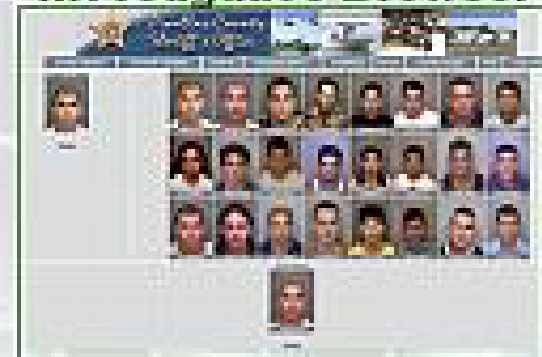




## Image Retrieval Browser



## Investigative Browser



**Airport**



**Jail Visitation Center**



**Courthouse**



## Pre Booking Kiosk

### Purpose:

To capture a standardized image of a person about to be booked into the jail and store that image in a queue for a Detention Deputy to search with.





# Pre Booking Kiosk Video



## **Pre-Booking Stations**

### **Purpose:**

**To search  
the  
database(s)  
with the  
image  
captured at  
the kiosk.**



# Pre-Booking Stations Video



# Actual Match Example



## **Formal Booking**

# **Purpose:**

**Formal image  
capture to include  
tattoos.**

**Issuance of  
Inmate  
Identification  
Card.**



# Formal Booking Video



## Release

# Purpose:

To confirm an  
inmate's  
identity just  
prior to release.



# Release Video



## Corrections Summary

- **Improved inmate identification / reduction of fraud in pre-booking**
- **Improved image collection and standardization in booking**
- **Image verification and collection at release**
- **Very little change to existing process**





## Image Retrieval

- Web based
- Access for employees on secure network
- Access for county police departments
- Statewide Access for law enforcement

The screenshot shows a web browser window displaying the Pinellas County Sheriff's Office ImageQuery interface. The browser title is "Pinellas County Sheriff's Office - Microsoft Internet Explorer". The address bar shows the URL: <http://sopics.co.pinellas.fl.us/PCSOBR/Search.asp?USER=jmain@GROU>. The page features a header with the Pinellas County Sheriff's Office logo and navigation links: ImageQuery, PhotoPack Query, Help, and Logout. The user is identified as "USER: JMAIN".

The main content area is titled "ImageQuery" and contains a search form with the following sections:

- Personal Information:** Includes fields for Last Name, First Name, Middle Name, Docket Number, SSN(### - ## - ####), Gender (dropdown menu), Alias Last Name, Alias First Name, Alias Middle Name, DOB From, DOB To, Moniker, Place of Birth (dropdown menu with options: ALL, Alabama, Alaska), Race (dropdown menu with options: ALL, Black, Hispanic), and Age (From and To fields in years).
- Physical Information:** Includes fields for Weight Range (From and To dropdown menus), Height Range (From and To dropdown menus), Hair Length (dropdown menu with options: ALL, Shaved, Belding), Hair Color (dropdown menu with options: ALL, Bald, Blond), and Hair Style (dropdown menu with options: ALL, Afro, Natural).

On the right side of the form, there is a display area showing "You are visitor 216839" and a "Search" button. A "Reset" button is located at the bottom right of the form area.



## **Investigative Browser**

# **Examples**



## **St. Petersburg/Clearwater International Airport**

### **Purpose:**

**To check  
each ticketed  
passenger  
against a  
database of  
known  
terrorists and  
wanted  
felons.**





# Passenger's Perspective Video



# Deputy's Perspective Video



## Jail Visitation Center

### Purpose:

To check each visitor against a database of wanted felons.





# Jail Visitation Center Video



# **Match Examples**



## **Criminal Court Complex**

### **Purpose:**

**To check  
each visitor  
against a  
database of  
wanted  
felons.**





# Judicial Center Video



## For More Information

**Lt. Jim Main**

**(727) 464-7006**

**[jmain@pcsonet.com](mailto:jmain@pcsonet.com)**

**Scott McCallum**

**(727) 453-7193**

**[smccallum@pcsonet.com](mailto:smccallum@pcsonet.com)**